

INSTALLATION INSTRUCTIONS

SPRINTER 16" SINGLE WHEEL SIMULATORS WITH TURNING LOCK BRACKETS

1. TOOLS REQUIRED

RW1603-SAK

#3 Phillips head
screwdriver

PREPARATION

- Inspect and ensure all components are free from defects or damage prior to installation.
- Clean all wheels so mounting brackets attach to a clean wheel surface.

AFTER SIMULATOR INSTALLATION

- After wheel simulators are installed, inspect regularly to verify simulators are tight and secure to the wheel.
- Every month the simulators should be removed and thoroughly cleaned. Also, an inspection of the wheels, simulators and mounting brackets should be performed.
- Ensure all screws and nut connections are tight.
- Check brackets for excessive wear, hair line cracks, etc.
- If braided stainless steel air valves are installed, inspect for fraying and excessive wear. Also, ensure secure connections with the rim air valves.

CARE & REQUIRED MAINTENANCE

- Do not use harsh chemicals and strong acid-based soaps.
- Simulators should be washed with mild automotive car or truck wash soap and water on regular basis.

PROCEDURE: 16" Front and rear Wheel Simulators

- 1) See wheel photos. Identify the type of wheel you have. Start by finding the little holes in between the lug nuts.



Wheel with No little holes



Wheel with little holes in
between the lug nuts

- 2) Remove the factory black plastic center cap using a standard screwdriver (Fig. A).



Figure A

INSTALLATION INSTRUCTIONS

- 3) Install bracket larger opening over lug nuts. Bracket base will clear lug nuts. Please refer to option A or B.

Option A



Option B



- 4) Rotate the bracket clockwise and lock bracket in place. Rotate until the smaller openings of the bracket base lock under the tapered area of the lug nuts completely (Fig A1& 2) or (Fig B-1 & 2)



A-1



B-1



A-2



B-2

Note: Depending on the torque, and style of the ball seat lug nuts, and the condition of the wheel. You may need to use a rubber mallet or hammer to tap bracket until the smaller openings of the bracket base locks under the tapered area of the lug nuts. (Fig. A-3)



A-3



B-3

If you have an older wheel you will need to install the included Locking Tab(s) – Insert one of the brackets locking tabs between the two lug nuts (Fig. B-3 & B-4). Note: locking tab must be flush with bracket base.



B-4

INSTALLATION INSTRUCTIONS

- 5) Install the screw to the little hole on the bracket by align the hole of the bracket to the hole on the wheel (Fig. A-4 & 5) or (Fig. B-5 & 6).



A-4



B-5

Note: Ensure the screw is threaded smoothly.



A-5



B-6

- 6) Use a #3 Phillips head screwdriver to securely (Fig. A-6 or B-7).



A-6



B-7

- 7) Repeat process for the second bracket directly across from the first bracket (Fig. A-7 or B-8).



A-7



B-8

- 8) **Note:** The wheel cover hole with the air valve notch should line up with the wheel air valve stem. (Fig. C-1).



C-1

- 9) Hold the wheel up to the wheel and mounting brackets so the two holes in the wheel cover line up with the two threaded holes of the mounting brackets. (Fig. C-2).



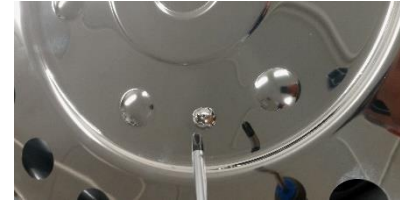
C-2

INSTALLATION INSTRUCTIONS

- 10) Next install the two 5/16" phillips head screws, and external tooth washers through the two holes in the wheel cover, and into the threaded holes of the mounting brackets. (Fig, C-3).



C-3



C-4

- 11) Use a **#3 Phillips head screwdriver** to securely tighten. (Fig C-4 & 5).



C-5

- 12) Repeat for the remaining wheel and simulators until completion (Fig. C-6).



C-6