

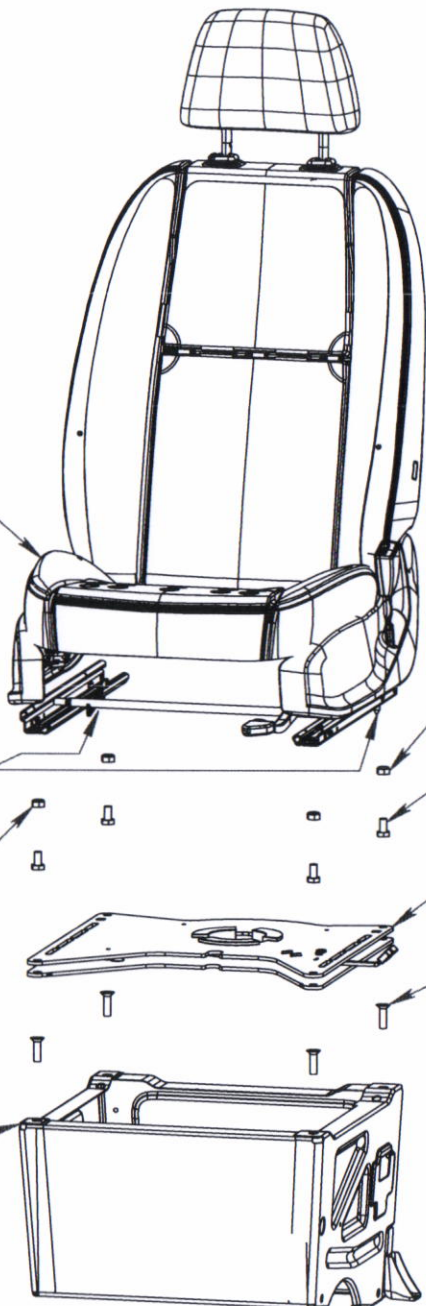
passenger assembly CBTO21D2

original passenger seat
SPRINTER 907

cut the 2 rods $\varnothing 9$
under the slides

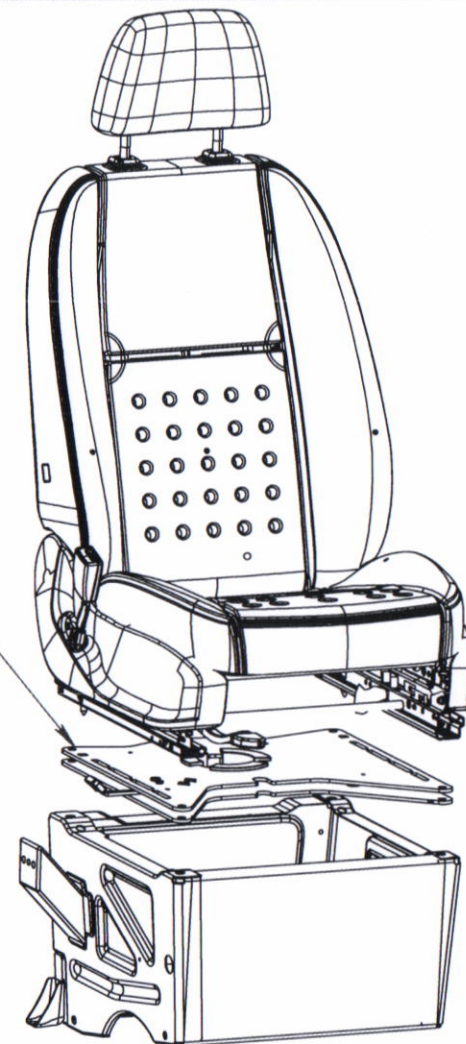
align the flat
of the nut,
parallel to
the slide

original base
SPRINTER 907



driver assembly CBTO21G2 symmetrical

CBTO21G2
driver swivel



4 nylstop nuts M10
classe 8

4 hex head screws M10x20
classe 8.8, 30 N.m

CBTO21D2
passenger swivel

4 countersunk screws
M10x35, classe 10.9, 30 N.m

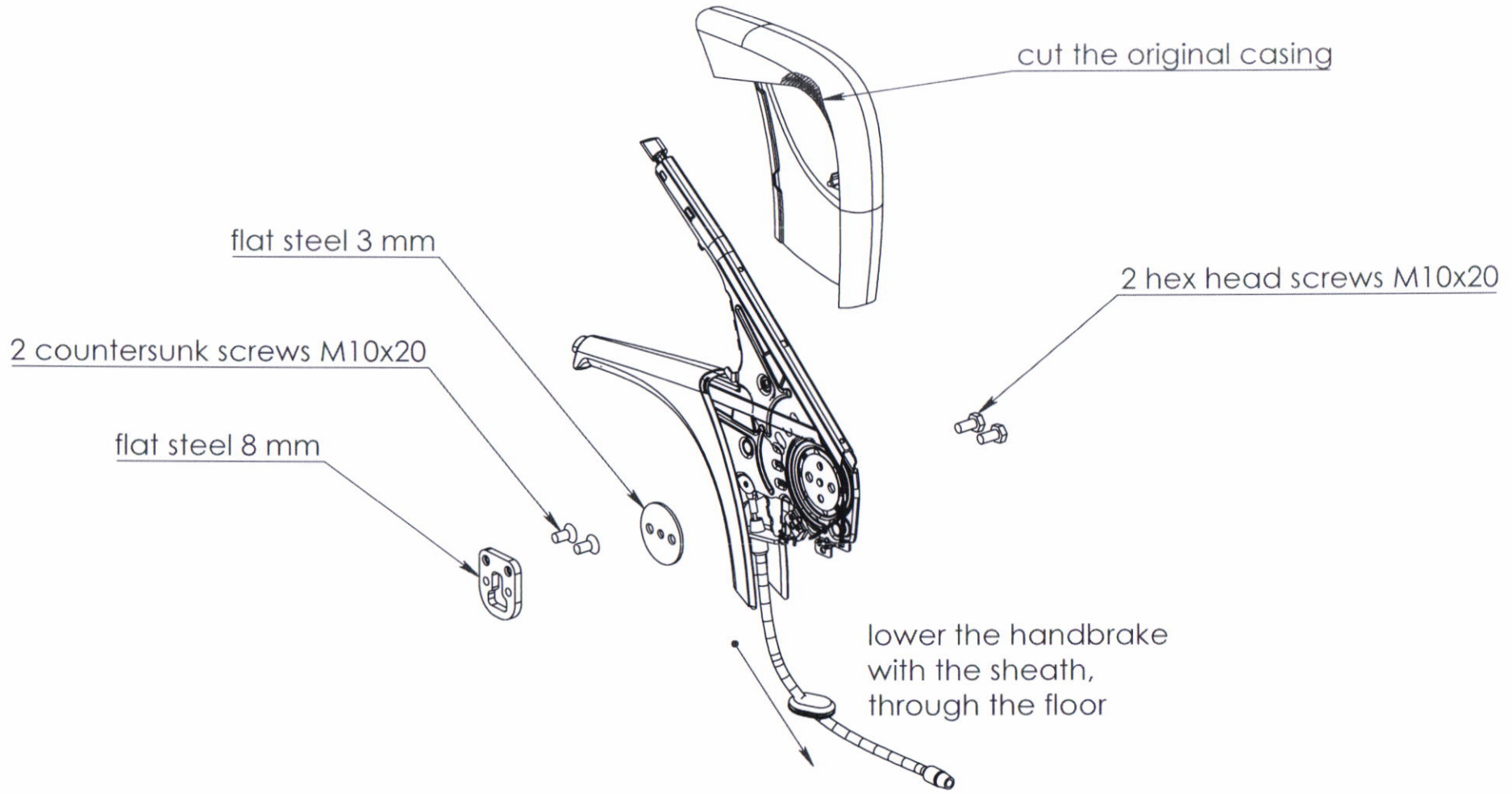
A	Version d'origine	21/10/2019	AL
Indice	Evolution	Date	Par

Révisions

CBTO21D2 + CBTO21G2 ASSEMBLY SPRINTER 907		MATIERE: TRAITEMENT: -	POIDS:
SCOPEMA rue du Pouloueix - 87150 Oradour-sur-Vayres - France Tel : +33 (0) 555 78 11 49 ; Fax : +33 (0) 555 78 15 88 ; Web : www.scopema.com		TOLERANCES GENERALES: JS11 / js11	
Client: -	Ref: -	Ech: 1/11	
Ce plan est la propriété de SCOPEMA Il ne peut être communiqué à des tiers ou reproduit sans autorisation écrite de SCOPEMA. This drawing cannot be printed or issued to anybody without SCOPEMA Authorisation		A4	
		Page: 1/1	

Unhook the connector block to secure it
in the center of the seat





A	Version d'origine	22/10/2019	AL
Indice	Evolution	Date	Par
Révisions			
Handbrake gap - SPRINTER 906 + 907		MATIERE: TRAITEMENT: -	POIDS: 3.04Kg
SCOPEMA rue du Pouloueix - 87150 Oradour-sur-Vayres - France Tel : +33 (0) 555 78 11 49 ; Fax : +33 (0)555 78 15 88 ; Web : www.scopema.com		TOLERANCES GENERALES: JS11 / js11	
		Ech: 1/6	